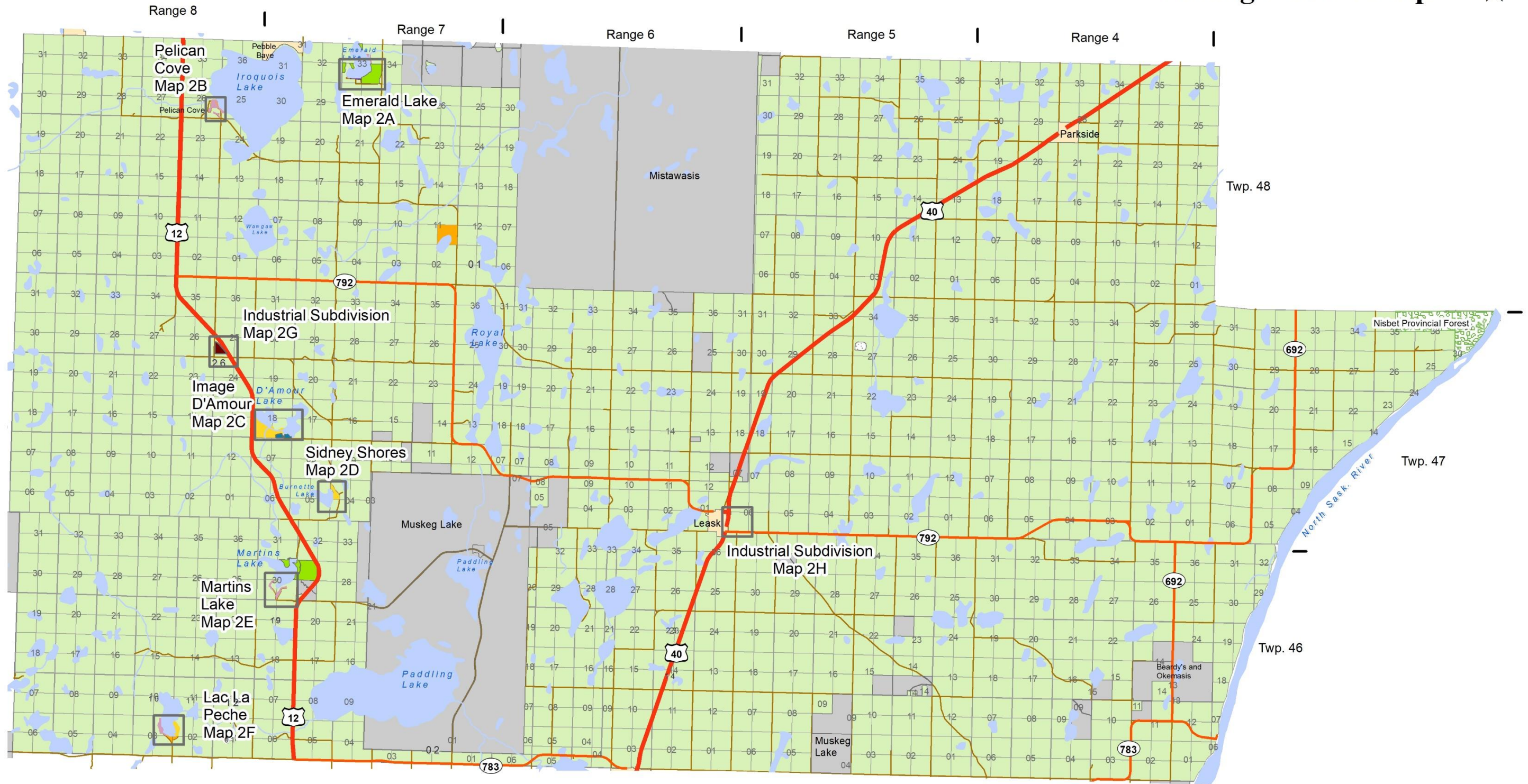


Rural Municipality of Leask No. 464 Zoning District Map



Legend	(LD) Lakeshore Development District	(RC) Resort Commercial District	First Nations Reserve
	(LD1) Lakeshore Development District 1	(AR) Agricultural Resource District	Urban Municipality
	(LD2) Lakeshore Development District 2	(F) Provincial Forest District	Regional Park
	(DB) Duncan's Beach Resort District	(CA) Conservation District	Provincial Highway
	(CRLD) Country Residential Lakeshore District		Primary Grid Road
	(CR) Country Residential District		Secondary Roads
	(M1) Light Industrial & Highway Commercial District		Waterbody
		Watercourse	

This is the Zoning District Map which accompanies Bylaw No. _____ adopted by the RM of Leask No. 464

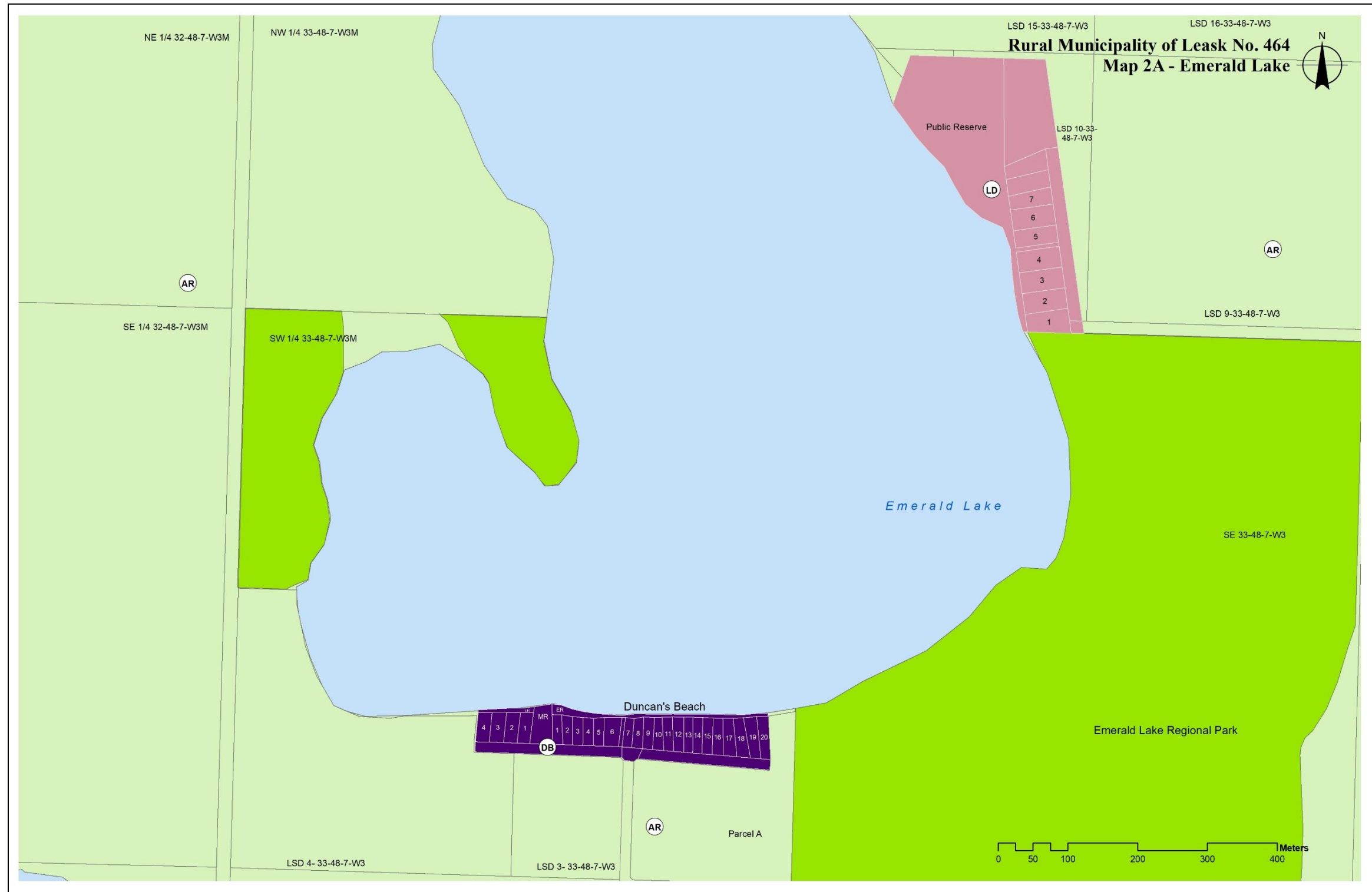
Reeve _____ Administer _____

SEAL

Kilometers

Source: All Geospatial data is from Information Services Corporation, Sask Surface Cadastral Dataset. Reproduced with the permission of Information Services Corporation.

Map is for reference use only and SARM is not responsible for any errors or omissions which may be present on map. The information included on the map may have changed since the date of creation and it is up to the user to verify all information presented.



Legend

- (LD) Lakeshore Development District
- (LD1) Lakeshore Development District 1
- (LD2) Lakeshore Development District 2
- (DB) Duncan's Beach Resort District
- (CRLD) Country Residential Lakeshore District
- (CR) Country Residential District
- (M1) Light Industrial & Highway Commercial District
- (RC) Resort Commercial District
- (AR) Agricultural Resource District
- (F) Provincial Forest District
- (CA) Conservation District
- First Nations Reserve
- Urban Municipality
- Regional Park
- Waterbody
- Watercourse

This Zoning Bylaw Map accompanies
Bylaw No. _____ adopted by the
Rural Municipality of Leask No. 464

Reeve

Administrator

SEAL

Date:

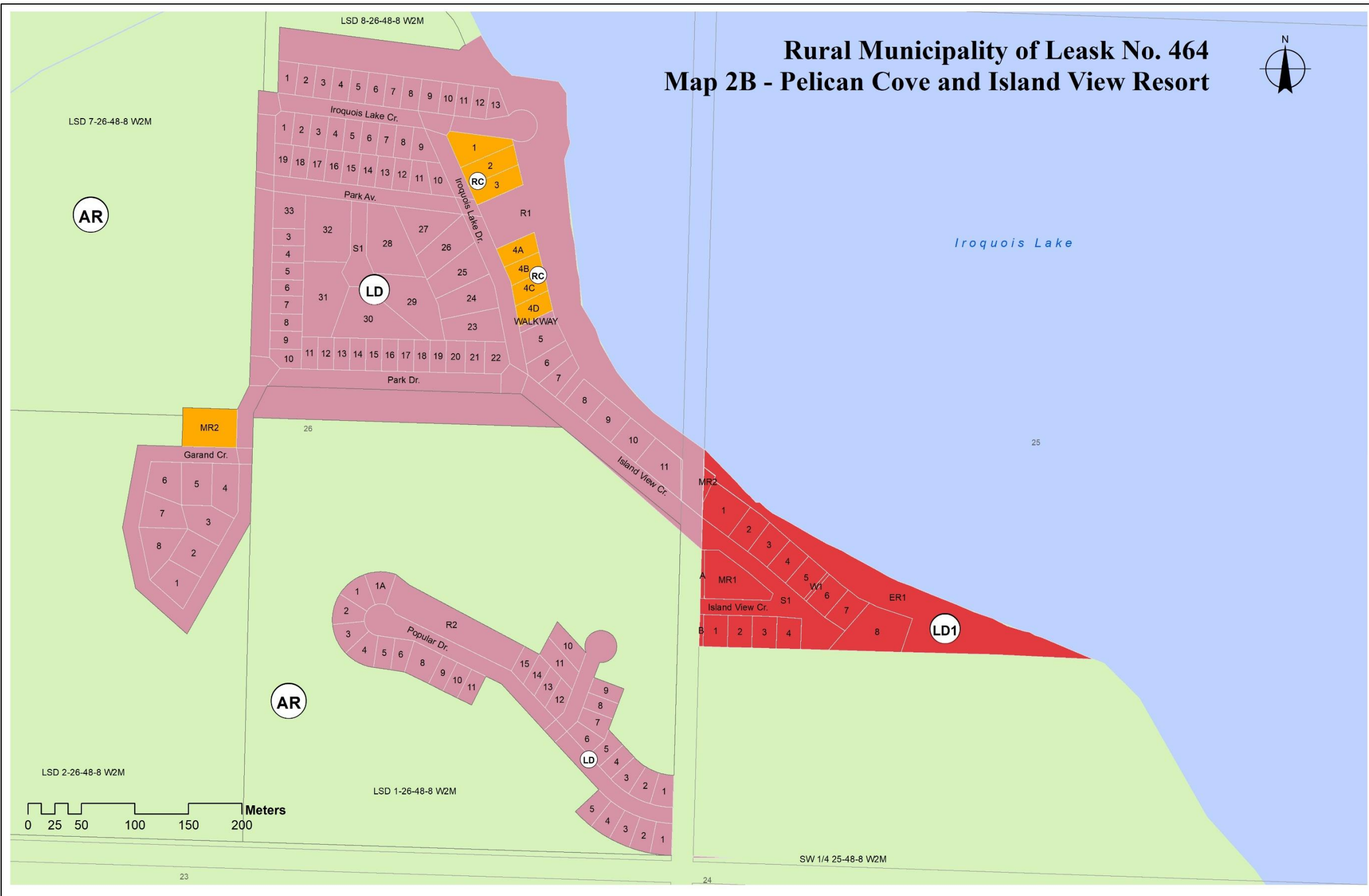
Sheet 1 of 8

Source: All Geospatial data is from Information Services Corporation, Sask Surface Cadastral Dataset. Reproduced with the permission of Information Services Corporation.

Map is for reference use only and SARM is not responsible for any errors or omissions which may be present on map. The information included on the map may have changed since the date of creation and it is up to the user to verify all information presented.

Rural Municipality of Leask No. 464 – Subdivision Zoning Maps

Rural Municipality of Leask No. 464 Map 2B - Pelican Cove and Island View Resort



Legend

- (LD) Lakeshore Development District
- (LD1) Lakeshore Development District 1
- (LD2) Lakeshore Development District 2
- (DB) Duncan's Beach Resort District
- (CRLD) Country Residential Lakeshore District
- (CR) Country Residential District
- (M1) Light Industrial & Highway Commercial District
- (RC) Resort Commercial District
- (AR) Agricultural Resource District
- (F) Provincial Forest District
- (C A) Conservation District
- First Nations Reserve
- Urban Municipality
- Regional Park
- Waterbody
- Watercourse

This Zoning Bylaw Map accompanies
Bylaw No. _____ adopted by the
Rural Municipality of Leask No. 464

Reeve

Administrator

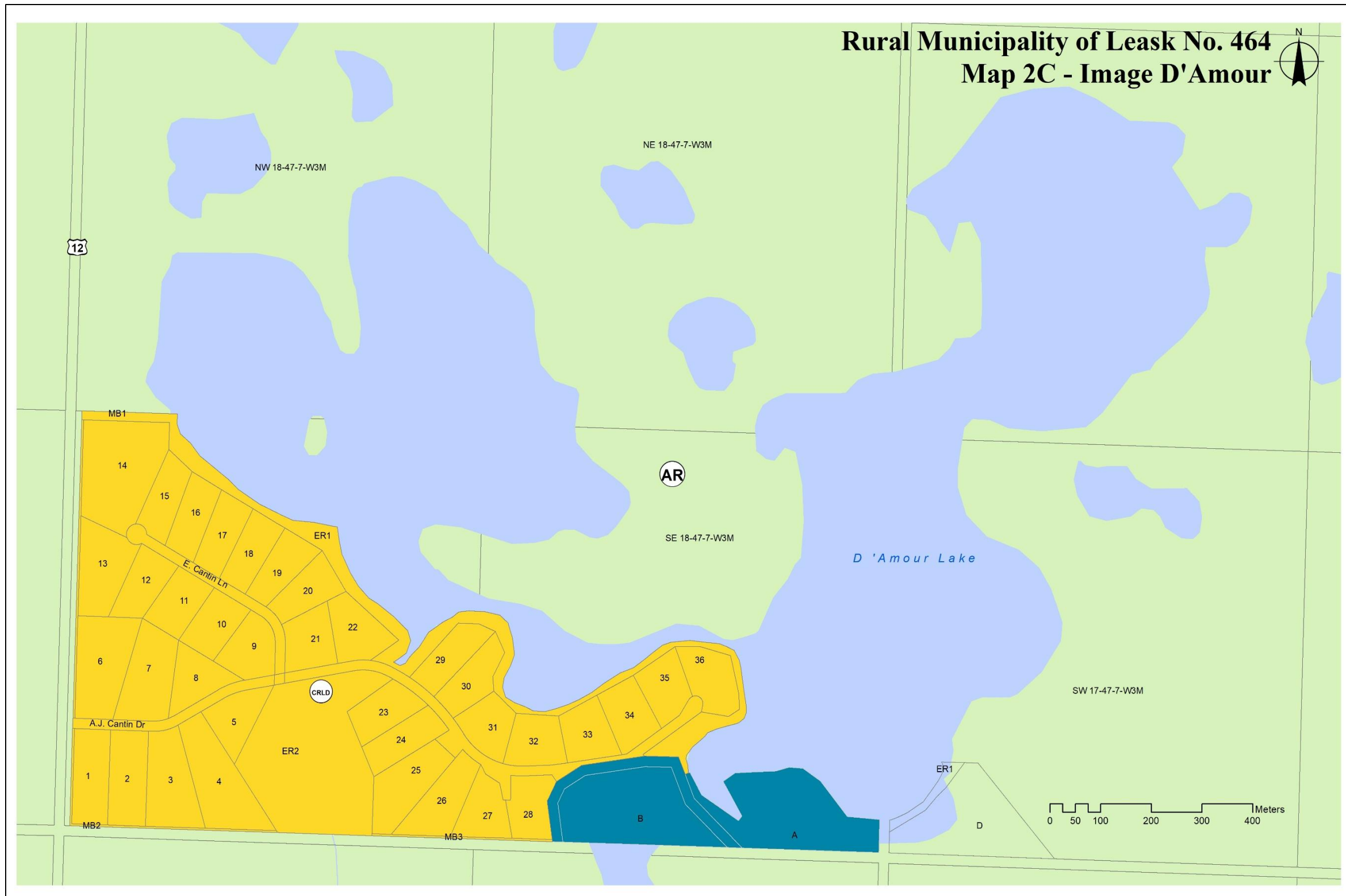
SEAL

Date:

Sheet 2 of 8

Source: All Geospatial data is from Information Services Corporation, Sask Surface Cadastral Dataset. Reproduced with the permission of Information Services Corporation.
Map is for reference use only and SARM is not responsible for any errors or omissions which may be present on map. The information included on the map may have changed since the date of creation and it is up to the user to verify all information presented.

Rural Municipality of Leask No. 464 – Subdivision Zoning Maps



Legend

- (LD) Lakeshore Development District
- (LD1) Lakeshore Development District 1
- (LD2) Lakeshore Development District 2
- (DB) Duncan's Beach Resort District
- (CRLD) Country Residential Lakeshore District
- (CR) Country Residential District
- (M1) Light Industrial & Highway Commercial District
- (RC) Resort Commercial District
- (AR) Agricultural Resource District
- (F) Provincial Forest District
- (CA) Conservation District
- First Nations Reserve
- Urban Municipality
- Regional Park
- Waterbody
- Watercourse

This Zoning Bylaw Map accompanies
Bylaw No. _____ adopted by the
Rural Municipality of Leask No. 464

Reeve

Administrator

SEAL

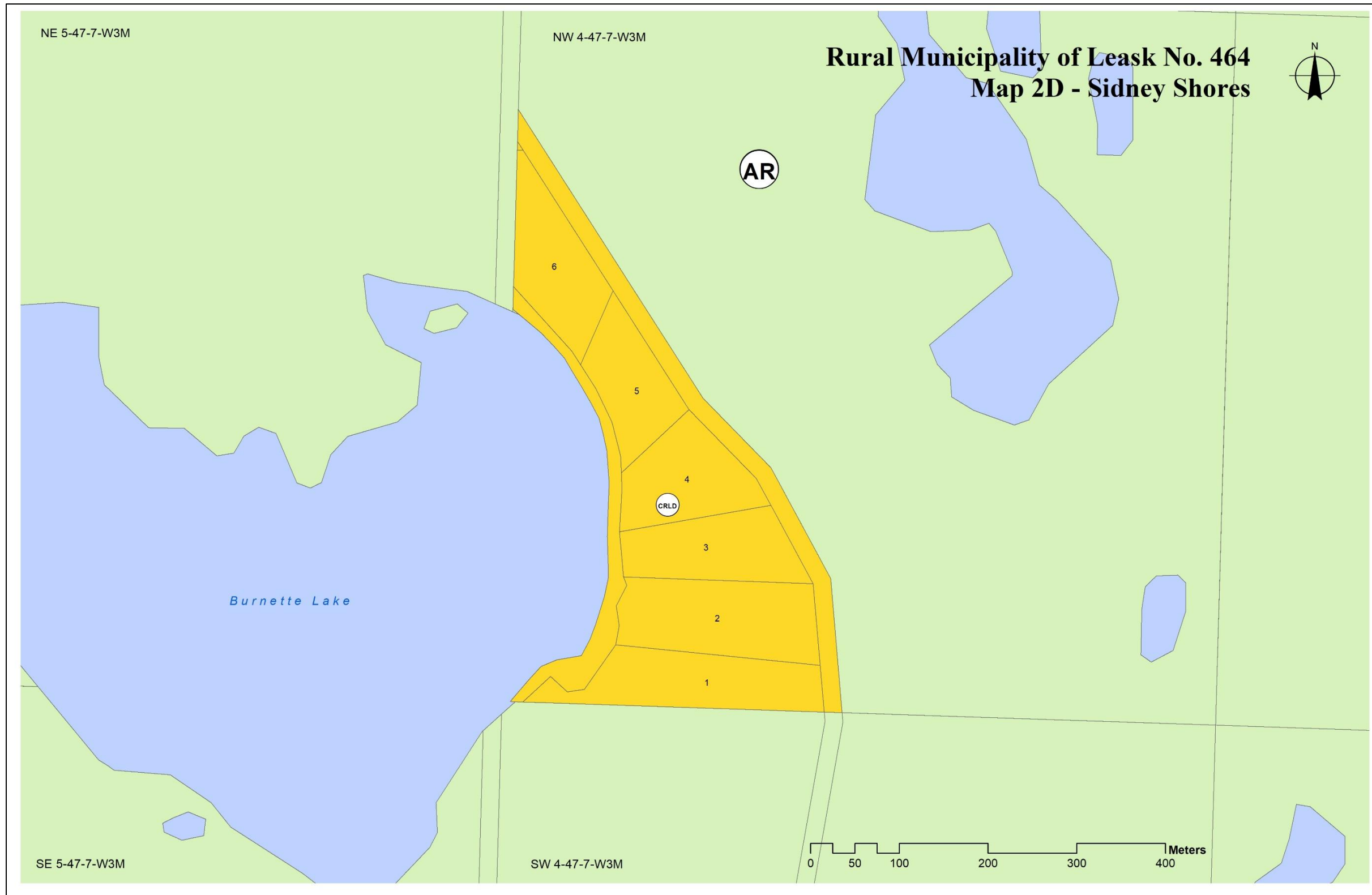
Date:

Sheet 3 of 8

Source: All Geospatial data is from Information Services Corporation, Sask Surface Cadastral Dataset. Reproduced with the permission of Information Services Corporation.

Map is for reference use only and SARM is not responsible for any errors or omissions which may be present on map. The information included on the map may have changed since the date of creation and it is up to the user to verify all information presented.

Rural Municipality of Leask No. 464 – Subdivision Zoning Maps



Legend

- (LD) Lakeshore Development District
- (LD1) Lakeshore Development District 1
- (LD2) Lakeshore Development District 2
- (DB) Duncan's Beach Resort District
- (CRLD) Country Residential Lakeshore District
- (CR) Country Residential District
- (M1) Light Industrial & Highway Commercial District
- (RC) Resort Commercial District
- (AR) Agricultural Resource District
- (F) Provincial Forest District
- (CA) Conservation District
- First Nations Reserve
- Urban Municipality
- Regional Park
- Waterbody
- Watercourse

This Zoning Bylaw Map accompanies Bylaw No. _____ adopted by the Rural Municipality of Leask No. 464

Reeve Administrator

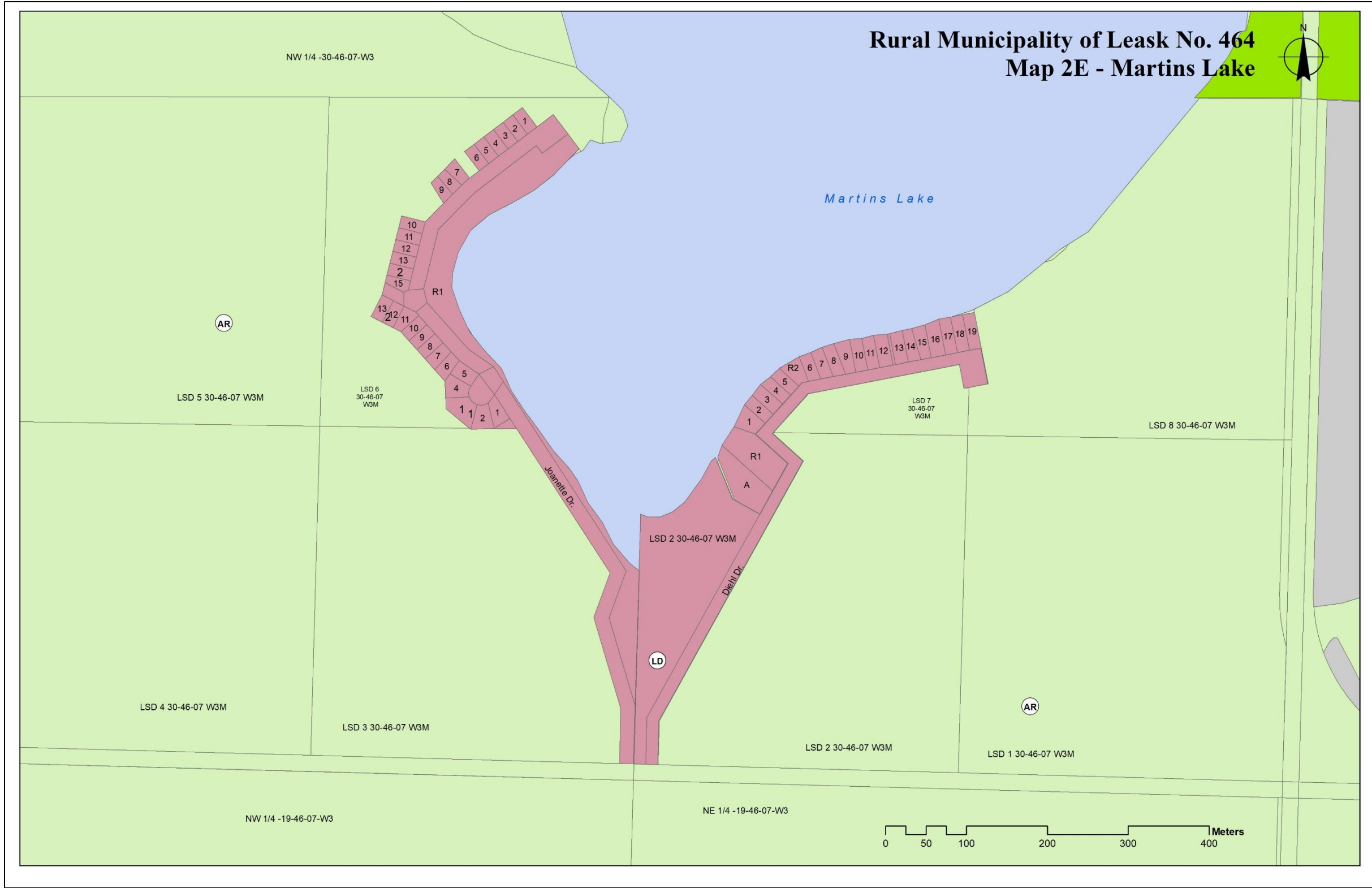
SEAL

Date: _____

Sheet 4 of 8

Source: All Geospatial data is from Information Services Corporation, Sask Surface Cadastral Dataset. Reproduced with the permission of Information Services Corporation.
Map is for reference use only and SARM is not responsible for any errors or omissions which may be present on map. The information included on the map may have changed since the date of creation and it is up to the user to verify all information presented.

Rural Municipality of Leask No. 464 – Subdivision Zoning Maps



- Legend**
- (LD) Lakeshore Development District
 - (LD1) Lakeshore Development District 1
 - (LD2) Lakeshore Development District 2
 - (DB) Duncan's Beach Resort District
 - (CRLD) Country Residential Lakeshore District
 - (CR) Country Residential District
 - (M1) Light Industrial & Highway Commercial District
 - (RC) Resort Commercial District
 - (AR) Agricultural Resource District
 - (F) Provincial Forest District
 - (CA) Conservation District
 - First Nations Reserve
 - Urban Municipality
 - Regional Park
 - Waterbody
 - Watercourse

This Zoning Bylaw Map accompanies
Bylaw No. _____ adopted by the
Rural Municipality of Leask No. 464

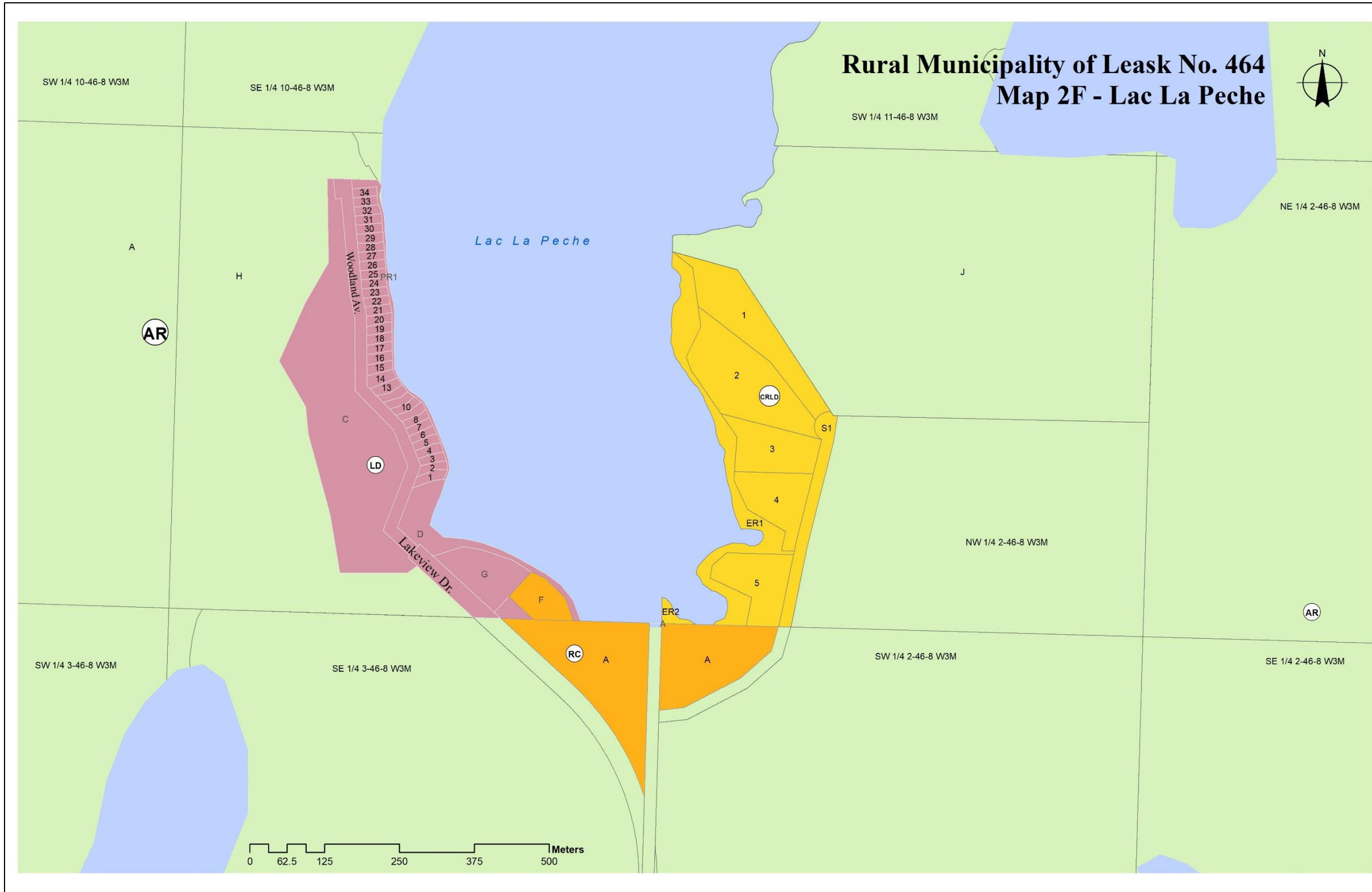
Reeve Administrator

SEAL

Date:

Source: All Geospatial data is from Information Services Corporation, Sask Surface Cadastral Dataset. Reproduced with the permission of Information Services Corporation.
Map is for reference use only and SARM is not responsible for any errors or omissions which may be present on map. The information included on the map may have changed since the date of creation and it is up to the user to verify all information presented.

Rural Municipality of Leask No. 464 – Subdivision Zoning Maps



Legend

- (LD) Lakeshore Development District
- (LD1) Lakeshore Development District 1
- (LD2) Lakeshore Development District 2
- (DB) Duncan's Beach Resort District
- (CRLD) Country Residential Lakeshore District
- (CR) Country Residential District
- (M1) Light Industrial & Highway Commercial District
- (RC) Resort Commercial District
- (AR) Agricultural Resource District
- (F) Provincial Forest District
- (CA) Conservation District
- First Nations Reserve
- Urban Municipality
- Regional Park
- Waterbody
- Watercourse

This Zoning Bylaw Map accompanies
Bylaw No. _____ adopted by the
Rural Municipality of Leask No. 464

Reeve

Administrator

SEAL

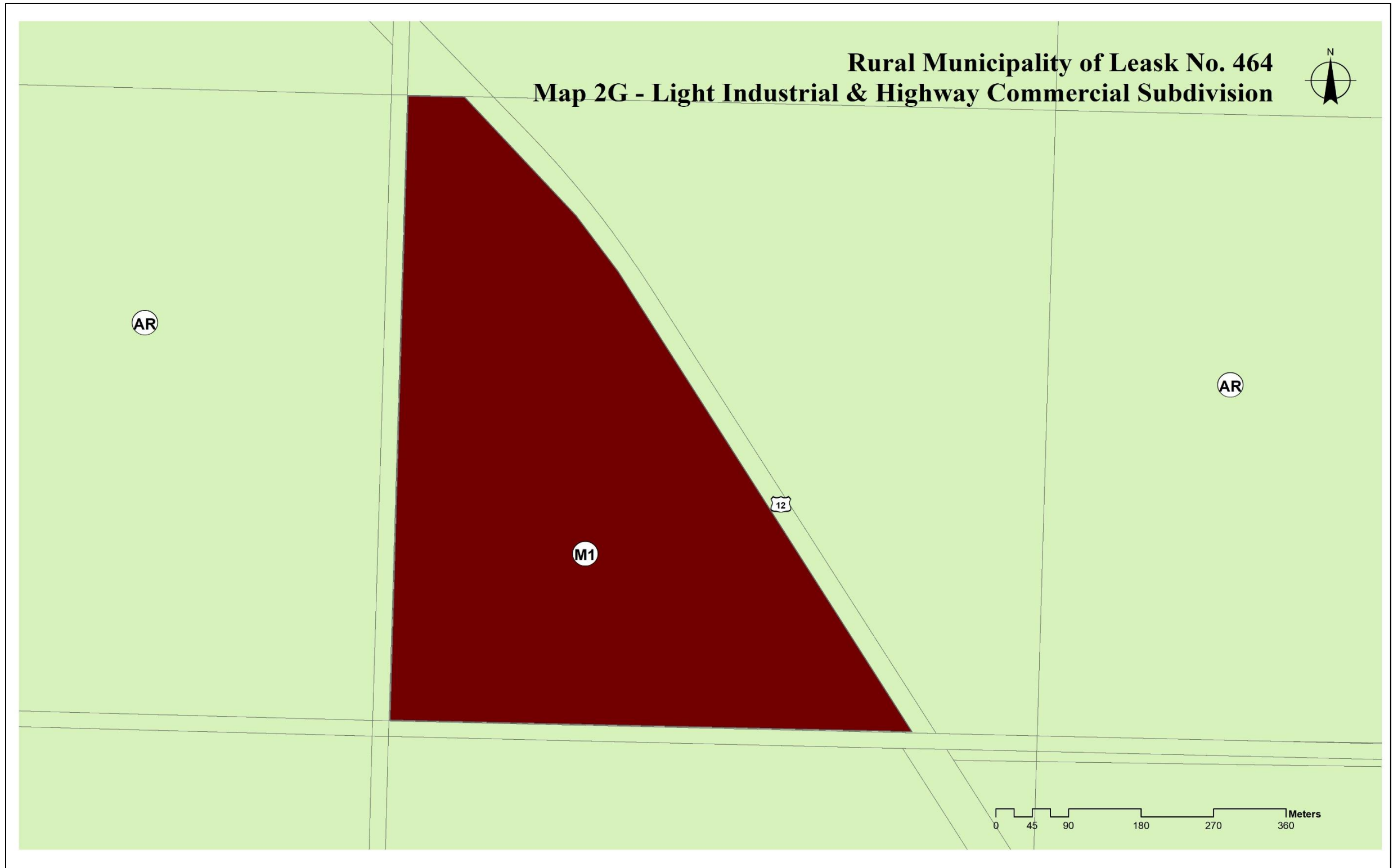
Date:

Sheet 6 of 8

Source: All Geospatial data is from Information Services Corporation, Sask Surface Cadastral Dataset. Reproduced with the permission of Information Services Corporation.

Map is for reference use only and SARM is not responsible for any errors or omissions which may be present on map. The information included on the map may have changed since the date of creation and it is up to the user to verify all information presented.

Rural Municipality of Leask No. 464 – Subdivision Zoning Maps



- Legend**
- (LD) Lakeshore Development District
 - (LD1) Lakeshore Development District 1
 - (LD2) Lakeshore Development District 2
 - (DB) Duncan's Beach Resort District
 - (CRLD) Country Residential Lakeshore District
 - (CR) Country Residential District
 - (M1) Light Industrial & Highway Commercial District
 - (RC) Resort Commercial District
 - (AR) Agricultural Resource District
 - (F) Provincial Forest District
 - (CA) Conservation District
 - First Nations Reserve
 - Urban Municipality
 - Regional Park
 - Waterbody
 - Watercourse

This Zoning Bylaw Map accompanies Bylaw No. _____ adopted by the Rural Municipality of Leask No. 464

_____ Reeve _____ Administrator

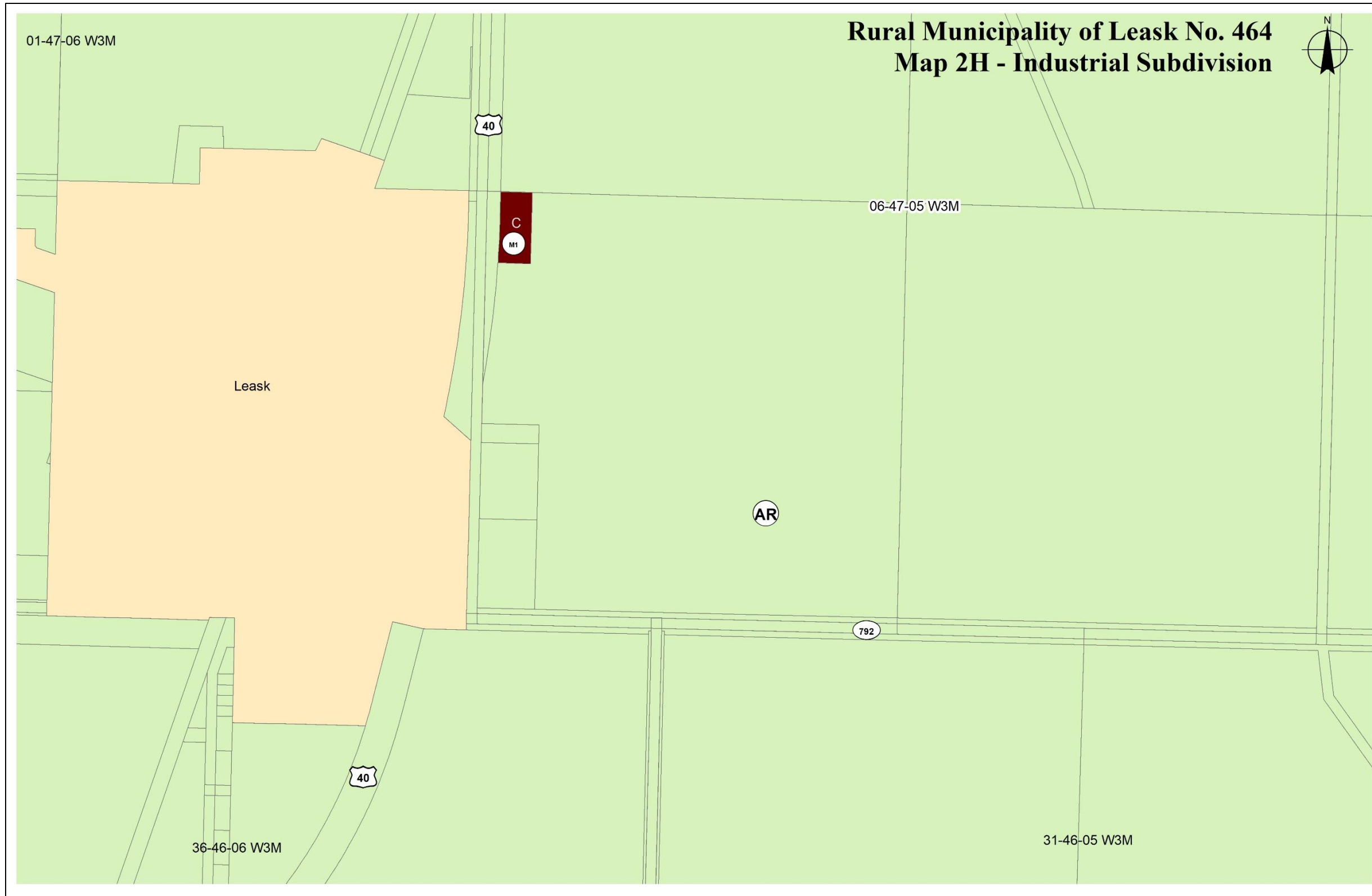
SEAL

Date: _____

Sheet 7 of 8

Source: All Geospatial data is from Information Services Corporation, Sask Surface Cadastral Dataset. Reproduced with the permission of Information Services Corporation.
Map is for reference use only and SARM is not responsible for any errors or omissions which may be present on map. The information included on the map may have changed since the date of creation and it is up to the user to verify all information presented.

Rural Municipality of Leask No. 464 – Subdivision Zoning Maps



- Legend**
- (LD) Lakeshore Development District
 - (LD1) Lakeshore Development District 1
 - (LD2) Lakeshore Development District 2
 - (DB) Duncan's Beach Resort District
 - (CRLD) Country Residential Lakeshore District
 - (CR) Country Residential District
 - (M1) Light Industrial & Highway Commercial District
 - (RC) Resort Commercial District
 - (AR) Agricultural Resource District
 - (F) Provincial Forest District
 - (CA) Conservation District
 - First Nations Reserve
 - Urban Municipality
 - Regional Park
 - Waterbody
 - Watercourse

This Zoning Bylaw Map accompanies
Bylaw No. _____ adopted by the
Rural Municipality of Leask No. 464

Reeve Administrator

SEAL

Date:

Sheet 8 of 8

Source: All Geospatial data is from Information Services Corporation, Sask Surface Cadastral Dataset. Reproduced with the permission of Information Services Corporation.
Map is for reference use only and SARM is not responsible for any errors or omissions which may be present on map. The information included on the map may have changed since the date of creation and it is up to the user to verify all information presented.