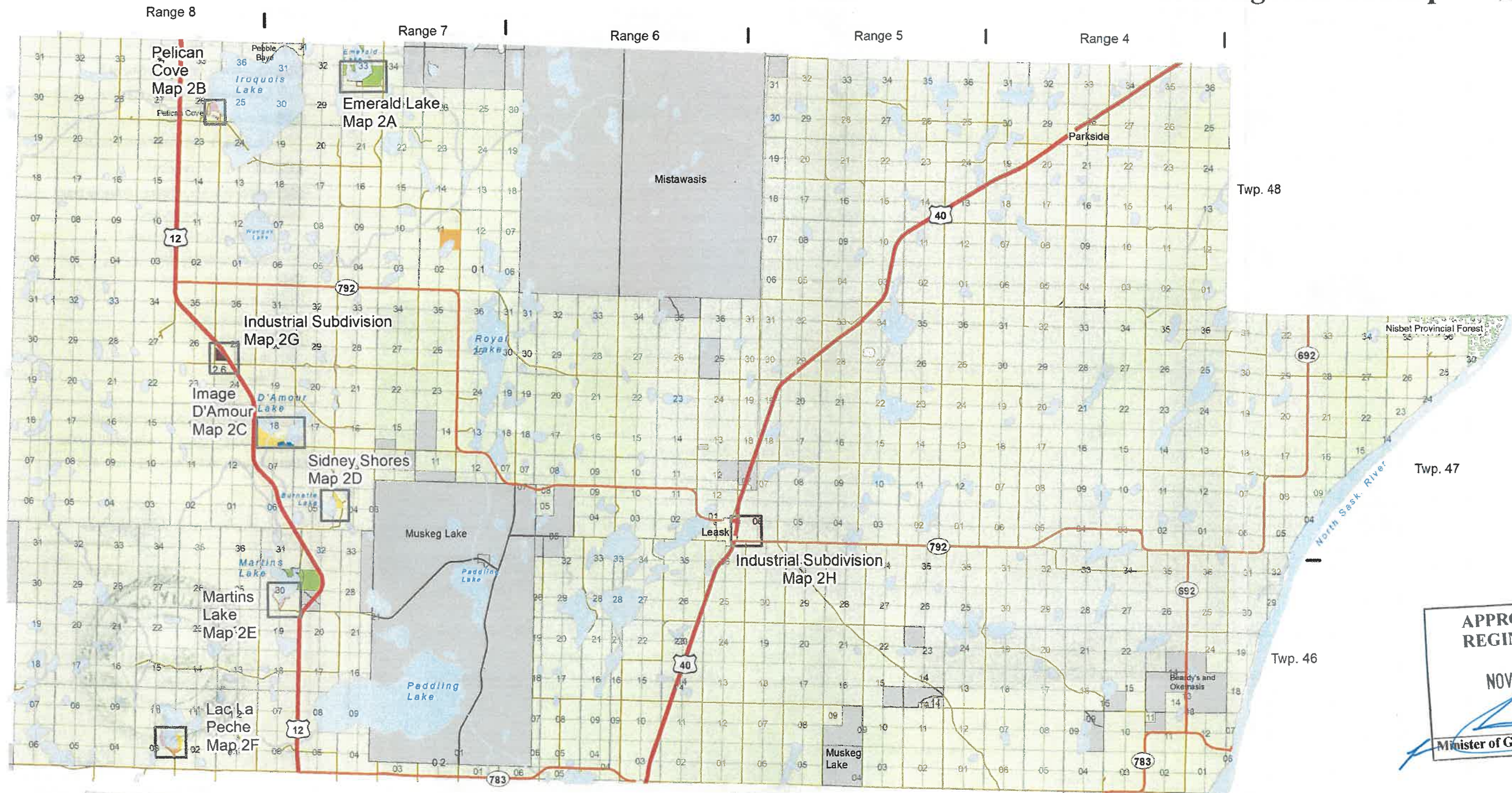


Rural Municipality of Leask No. 464 – Subdivision Zoning Maps

Rural Municipality of Leask No. 464  
Zoning District Map



APPROVED  
REGINA, SASK.  
NOV 09 2020  
*[Signature]*  
Minister of Government Relations

Legend	
(LD) Lakeshore Development District	(RC) Resort Commercial District
(LD1) Lakeshore Development District 1	(AR) Agricultural Resource District
(LD2) Lakeshore Development District 2	(F) Provincial Forest District
(DB) Duncan's Beach Resort District	(CA) Conservation District
(CRLD) Country Residential Lakeshore District	First Nations Reserve
(CR) Country Residential District	Urban Municipality
(M1) Light Industrial & Highway Commercial District	Regional Park
	Provincial Highway
	Primary Grid Road
	Secondary Roads
	Waterbody
	Watercourse

This is the Zoning District Map which companies Bylaw No. 2-2020 adopted by the RM of Leask No. 464

*[Signature]*  
Reeve

*[Signature]*  
Administrator

0 1 2 4 6 8 Kilometers

Source: All Geospatial data is from Information Services Corporation, Sask Surface Cadastral Dataset. Reproduced with the permission of Information Services Corporation.

Map is for reference use only and SARM is not responsible for any errors or omissions which may be present on map. The information included on the map may have changed since the date of creation and it is up to the user to verify all information presented.