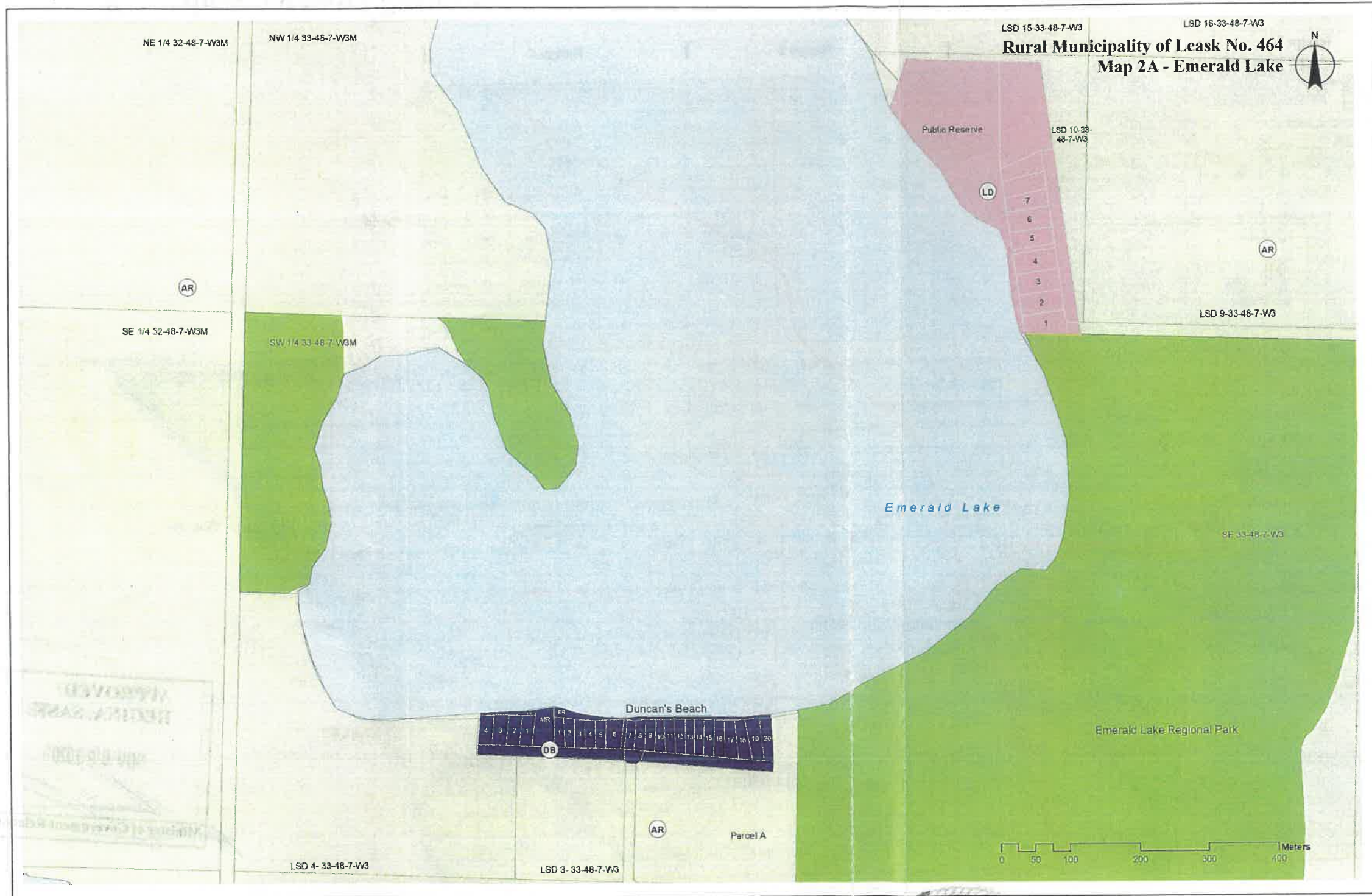


Rural Municipality of Leask No. 464 – Subdivision Zoning Maps



Legend

- (LD) Lakeshore Development District
- (LD1) Lakeshore Development District 1
- (LD2) Lakeshore Development District 2
- (DB) Duncan's Beach Resort District
- (CRLD) Country Residential Lakeshore District
- (CR) Country Residential District
- (M1) Light Industrial & Highway Commercial District
- (RC) Resort Commercial District
- (AR) Agricultural Resource District
- (F) Provincial Forest District
- (CA) Conservation District
- First Nations Reserve
- Urban Municipality
- Regional Park
- Waterbody
- Watercourse

This Zoning Bylaw Map accompanies Bylaw No. 2-2020 adopted by the Rural Municipality of Leask No. 464

Cult *JA*

Reeve Administrator



Date: August 12 / 2020

Sheet 1 of 8

**APPROVED
REGINA, SASK.**

NOV 09 2020

[Signature]
Minister of Government Relations

Source: All Geospatial data is from Information Services Corporation, Sask Surface Cadastral Dataset. Reproduced with the permission of Information Services Corporation.

Map is for reference use only and SARM is not responsible for any errors or omissions which may be present on map. The information included on the map may have changed since the date of creation and it is up to the user to verify all information presented.

